



Summary

[Request a quote](#)

[Catalog](#)

Low Voltage	6
Wire Size/AWG	32 - 24
Gender	Standard
Plug	Plug - Straight
Locking system	Push-pull
Jacket cable outside diameter [mm]	4.00 - 5.20 mm
Size	1P
Matching parts	PLG.M0.6GL.LG
Series	REDEL P - Push-Pull

Technical details

https://www.lemo.com/int_en/solutions/redel/redel-p-push-pull/pag-m0-6gl-ac52g.html

LEMO products and services are provided "as is". LEMO makes no warranties or representations with regard to LEMO product & services or use of them, express, implied or statutory, including for accuracy, completeness, or security. The user is fully responsible for his products and applications using LEMO components.

Electrical Configuration

Contact Termination Low voltage	Solder
R (max)	6.5 mOhm
Insert configuration value	1P.M06 - 6 Low Voltage
Insulator	L: PEEK (UL 94 / V-0/1.5)
Rated current	6 Amps
Test voltage (kV rms) Contact-contact	1.05
Contact Type	Solder
Max. Solid Conductor	0.14 mm ² (AWG 26)
Max. Stranded Conductor	0.14 mm ² (AWG 26)
Air clearance	0.85 mm
Creepage distance	0.85 mm
Bucket Dia.	0.6 mm (0.024in)
Contact Dia.	0.7 mm (0.0275in)
Low Voltage	6
Wire Size/AWG	32 - 24
Gender	Standard

Form & Material

Shell style / Model id	PA - Straight plug with cable collet
Plug	Straight
Housing material	PSU (Polysulfone), gray
Locking system	Push-pull
Keying	1 key (alpha=0, Plug: male contact, Receptacle: female contact)
Variant	Gray collet nut
Weight	4.77 g

https://www.lemo.com/int_en/solutions/redel/redel-p-push-pull/pag-m0-6gl-ac52g.html

LEMO products and services are provided "as is". LEMO makes no warranties or representations with regard to LEMO product & services or use of them, express, implied or statutory, including for accuracy, completeness, or security. The user is fully responsible for his products and applications using LEMO components.

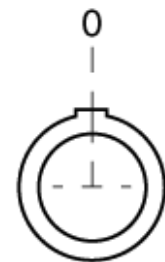
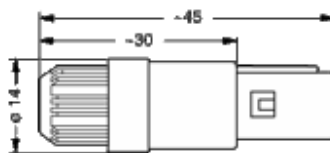
Environment

Technical domain	Energy and Industrial, Medical, Test and Measurement, Transportation, Aerospace and UAV
Environmental protection (IP rating)	IP50
Minimal temperature	-50°C / +150°C
F ret (max)	150 N
F ret (min)	50 N
Steam sterilization	> 100 times (with potting on rear connection)

Cable fixation

Cable termination protection	Standard back nut (no additional protection)
Fixation type	Cable collet
Jacket cable outside diameter [mm]	4.00 - 5.20 mm

Drawings



Recommended By Lemo








Accessories

Tools

https://www.lemo.com/int_en/solutions/redel/redel-p-push-pull/pag-m0-6gl-ac52g.html

LEMO products and services are provided "as is". LEMO makes no warranties or representations with regard to LEMO product & services or use of them, express, implied or statutory, including for accuracy, completeness, or security. The user is fully responsible for his products and applications using LEMO components.

Cables

Cable PartNumber	Material	Colour	Cable image
CMN.06.T28.042QBCE	TPR (medical)		
CMN.06.T28.044PGZE		grey	
CMN.06.T28.044PNZE			
106240	PTFE	White	
160140	PVC	Grey	
160260	PVC	Black	
60260	PTFE	White	
6280	PVC	Black	

https://www.lemo.com/int_en/solutions/redel/redel-p-push-pull/pag-m0-6gl-ac52g.html

LEMO products and services are provided "as is". LEMO makes no warranties or representations with regard to LEMO product & services or use of them, express, implied or statutory, including for accuracy, completeness, or security. The user is fully responsible for his products and applications using LEMO components.